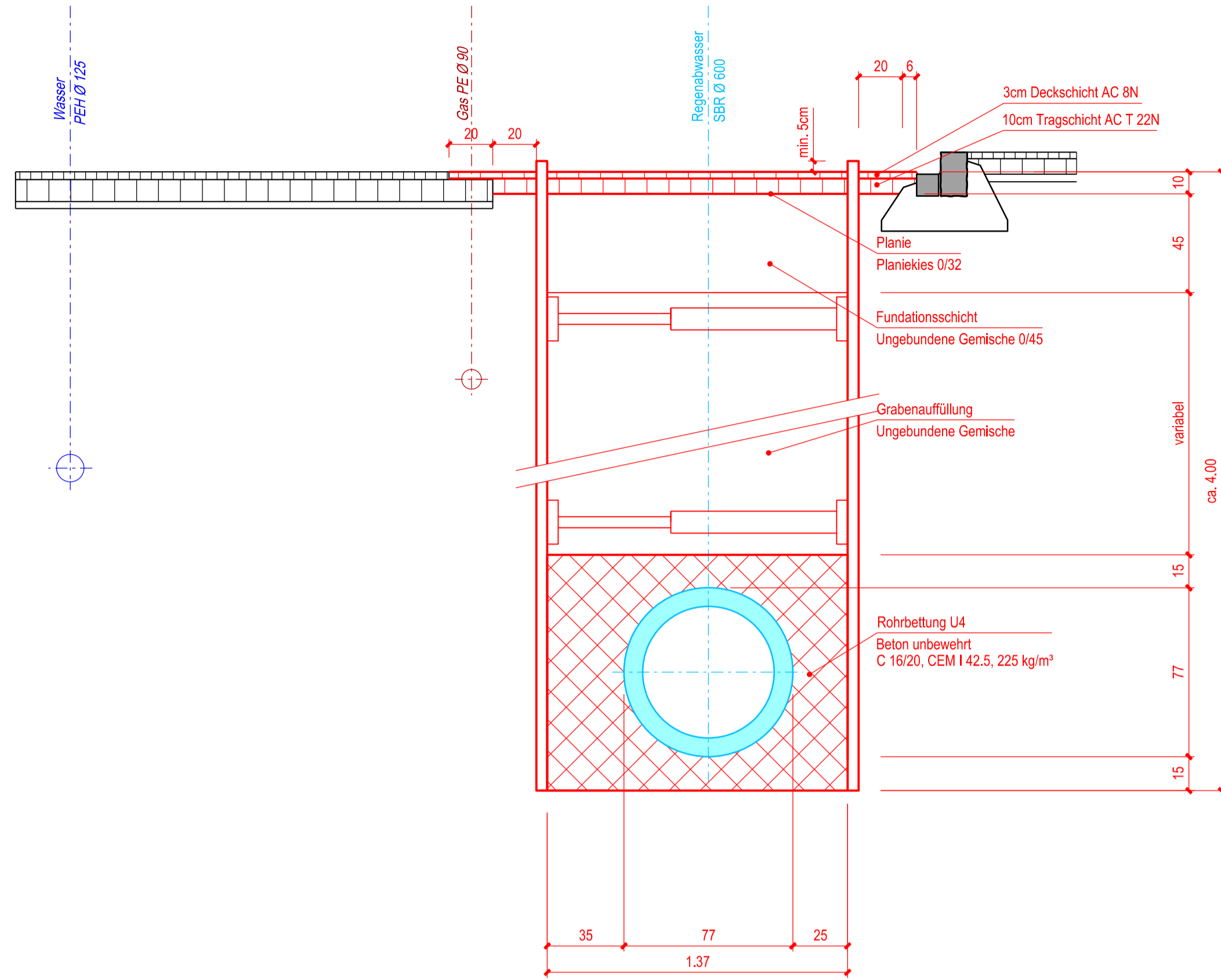
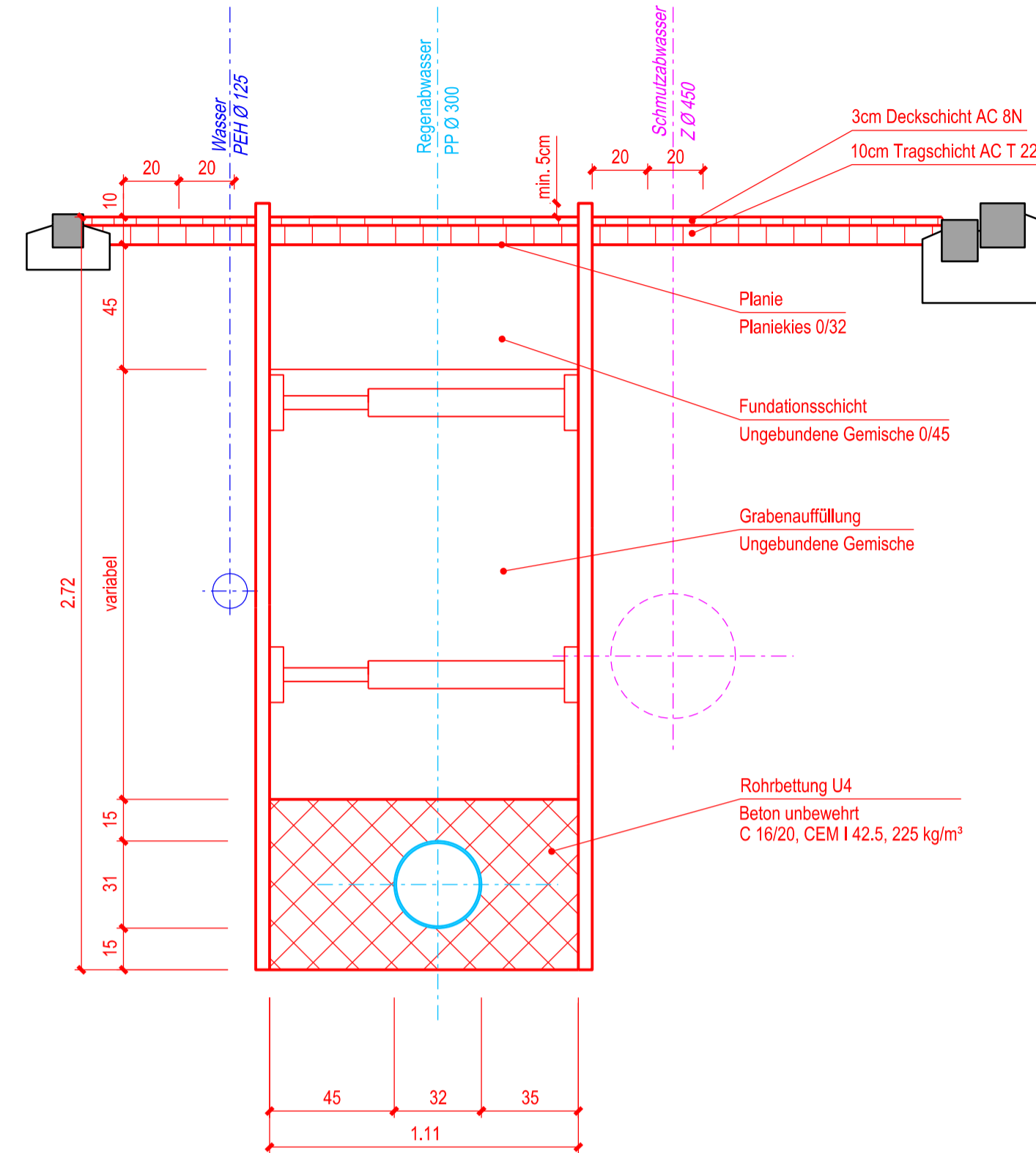


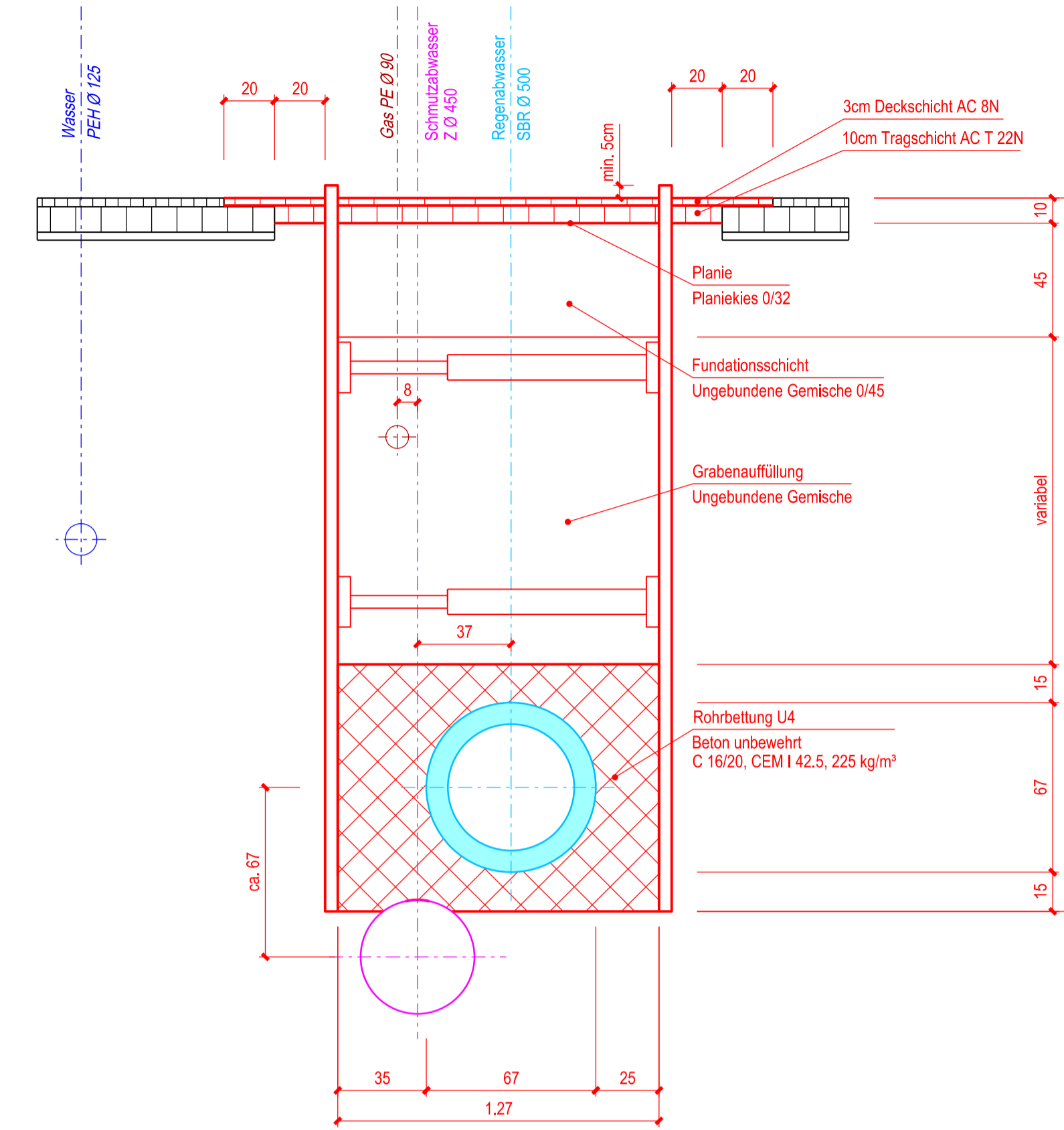
Grabenprofil 1



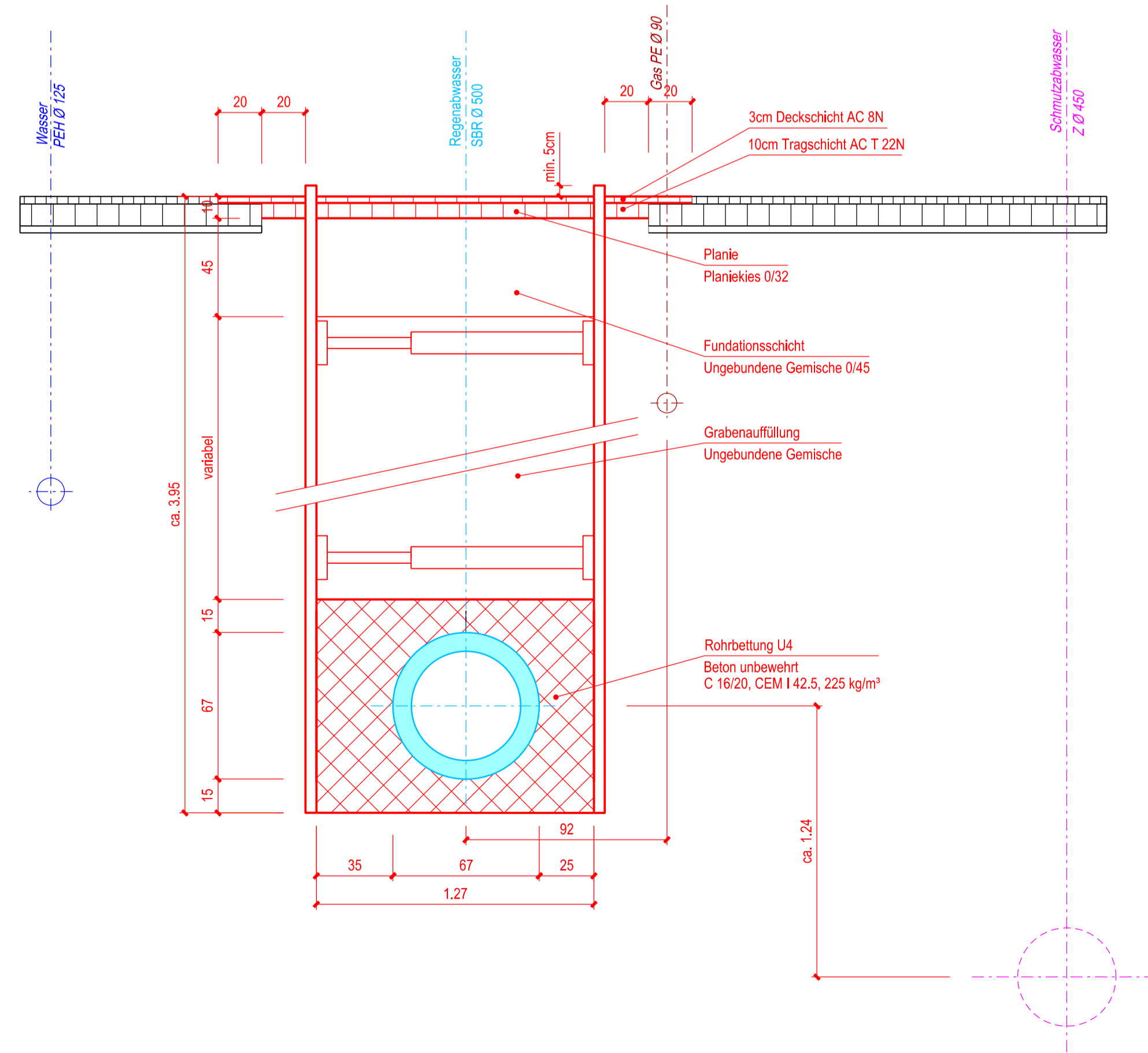
Grabenprofil 2



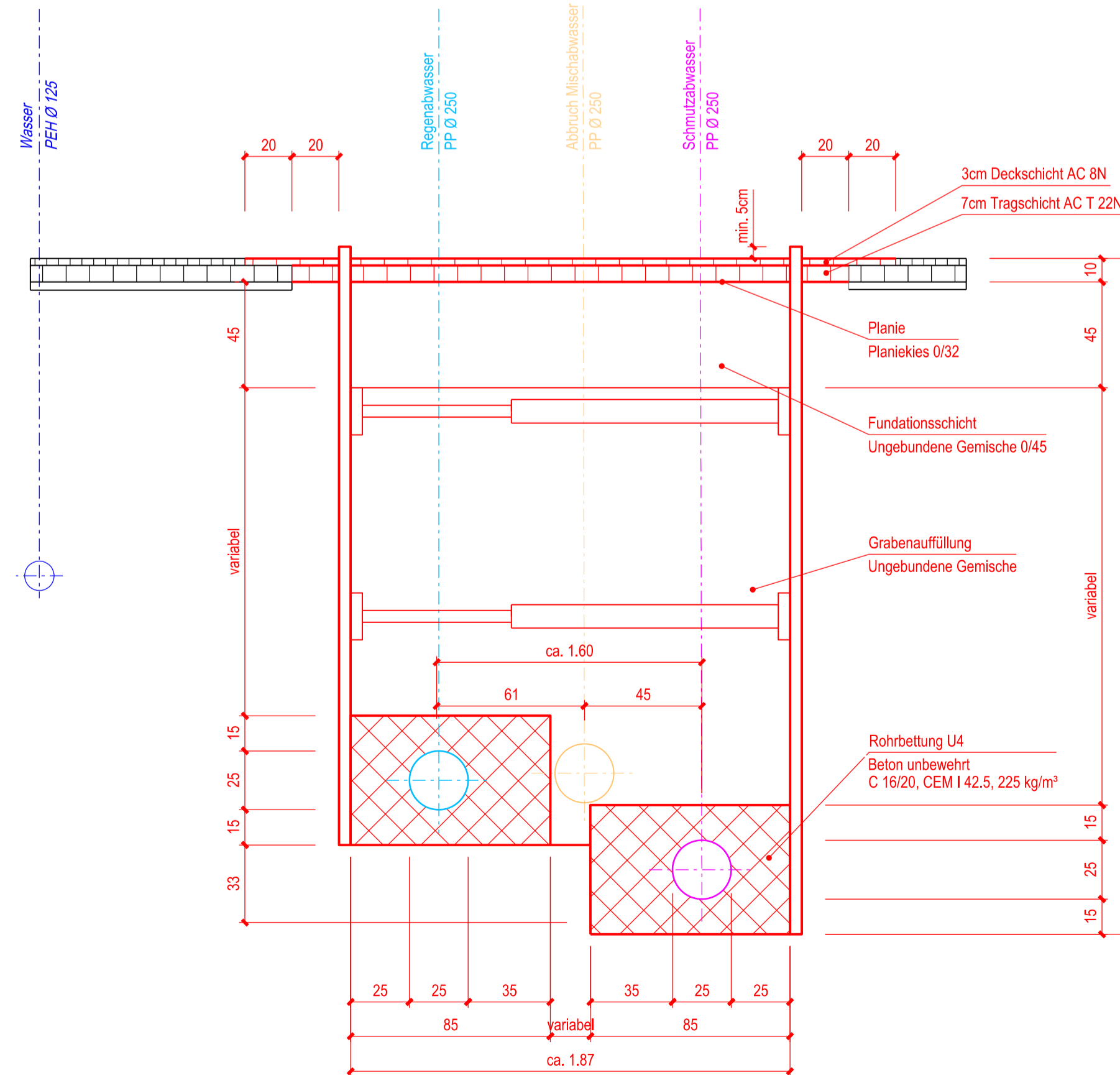
Grabenprofil 3



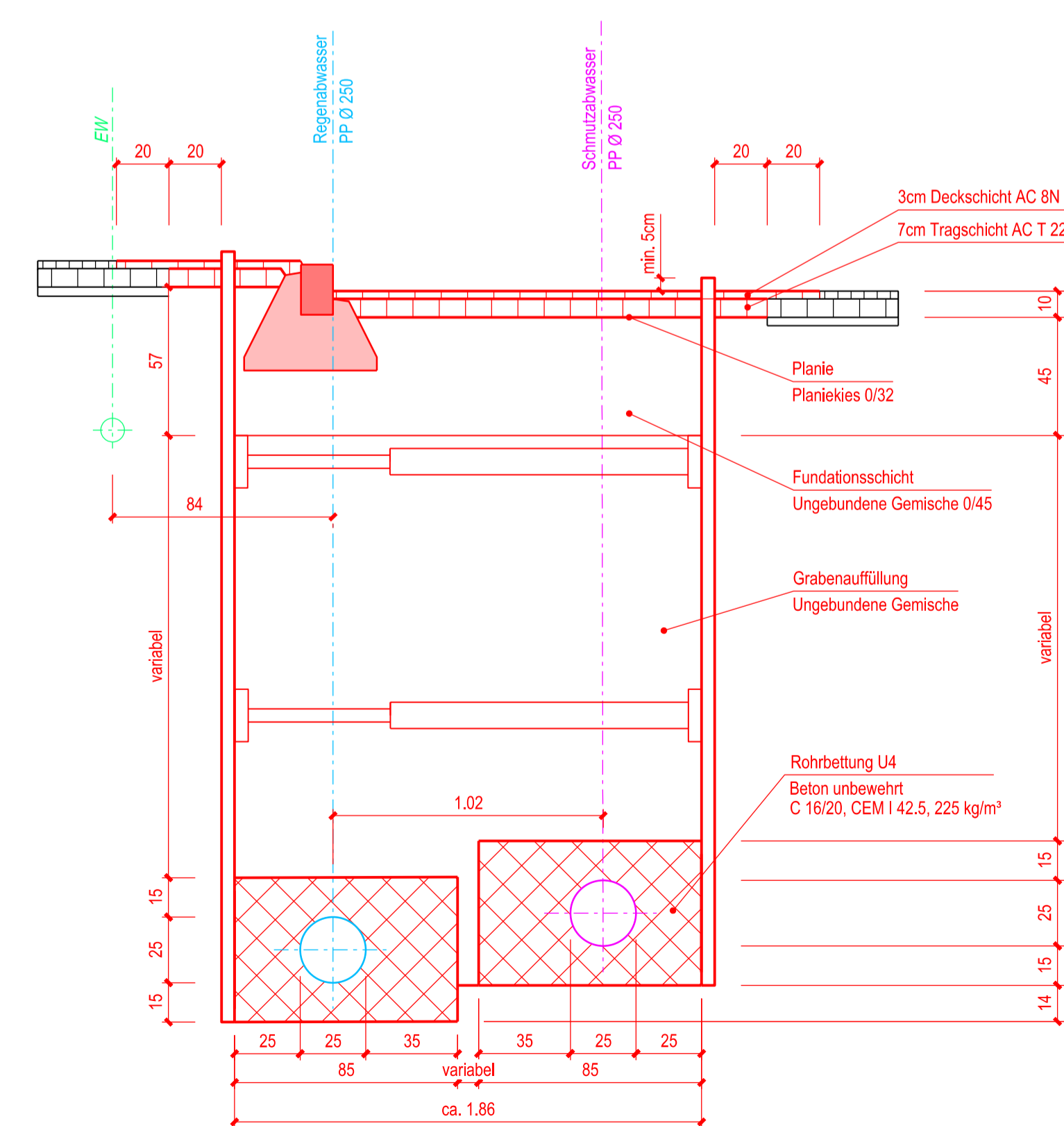
Grabenprofil 4



Grabenprofil 5



Grabenprofil 6



Bauherr Einwohnergemeinde Risch Zentrum Dorfmat 6343 Rotkreuz		Basler & Hofmann Ingenieure, Planer und Berater Nidelsstrasse 5, CH-4010 Kriens T +41 41 368 46 46 www.baslerhofmann.ch	
Einführung Trennsystem Weid, Rotkreuz			
Ausführungsprojekt			
Grabennormalien			
Grabenprofile 1:20		VORABZUG	
Änd.		Datum	Gez.
-	-	30.07.2021	JIS TSC
-	-	-	-
-	-	-	-
-	-	-	-
Plan Nr.: 07032-51306		Format 59 / 105	Plotdatum 30.07.2021